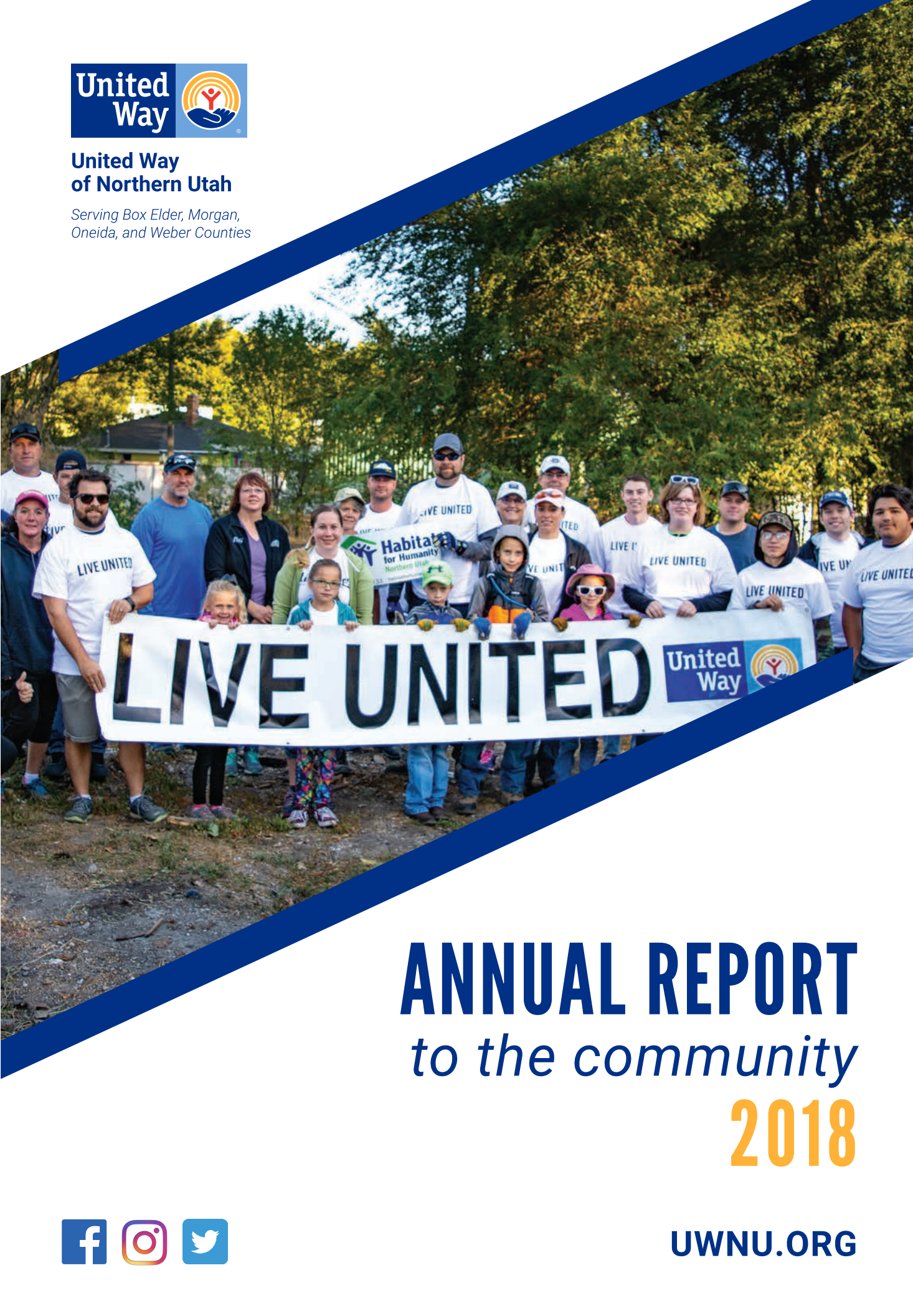




**United Way
of Northern Utah**

*Serving Box Elder, Morgan,
Oneida, and Weber Counties*



ANNUAL REPORT

to the community

2018



UWNU.ORG

LEADERSHIP MESSAGE



Tim Jackson

CEO & President
United Way of Northern Utah

Dear Friends,

In 2018, United Way of Northern Utah continued to evolve beyond a fundraising organization into a vital community leader, and through this advancement we are accelerating our impact and benefit to the community.

We are committed to supporting the entire community by forging partnerships focused on the common good, finding better solutions to persistent problems, mobilizing resources, and inspiring volunteers to join the effort. While many in the community are thriving, thousands of families in Northern Utah continue to face significant obstacles and have limited opportunities. We are helping them to break down those obstacles (often one family at a time) while also changing systems to create pathways for every family to have access to great opportunities.

We have three key goal areas:

Education: *Prepare all children to succeed in school and life*

Income: *Build a community of financially stable and independent families*

Health: *Sustain a community of healthy youth and adults*



Micheal Joseph

Chair, Board of Directors

In 2018, we worked with Ogden Civic Action Network (Ogden CAN) and other partners to establish the United Partnership Council, which will improve student achievement through alignment of cradle-to-career supports. This coordinated effort doubles the number of engaged community stakeholders and integrates existing work. We increased our number of full-time coordinators in Community Schools from six to seven, and will add two more in 2019. We began to facilitate coordination of early childhood services in Box Elder County, and we placed a renewed emphasis on volunteerism, engaging more community members in service to their neighbors than ever before. Our new Research, Assessment, and Evaluation Department strengthens the support we provide to the community and to our partners. Some key accomplishments from the past year are highlighted in this report, but to see the full scope of our work, we invite you to visit us in person or online at uwnu.org.

As we move into 2019, United Way of Northern Utah is developing a strategic vision for the next five years, based upon the needs of our local communities in Weber, Box Elder, and Morgan counties and surrounding areas. It will be unified with community goals that will be developed collaboratively with our residents, board, staff, and network of community partners. Based on our strategic vision and goals, we will develop a roadmap with rigorous plans to build a community where everyone can thrive and where we all **LIVE UNITED**.

We invite you to learn more and join us in this work!

Sincerely,

A handwritten signature in white ink that reads "Tim Jackson".

Tim Jackson

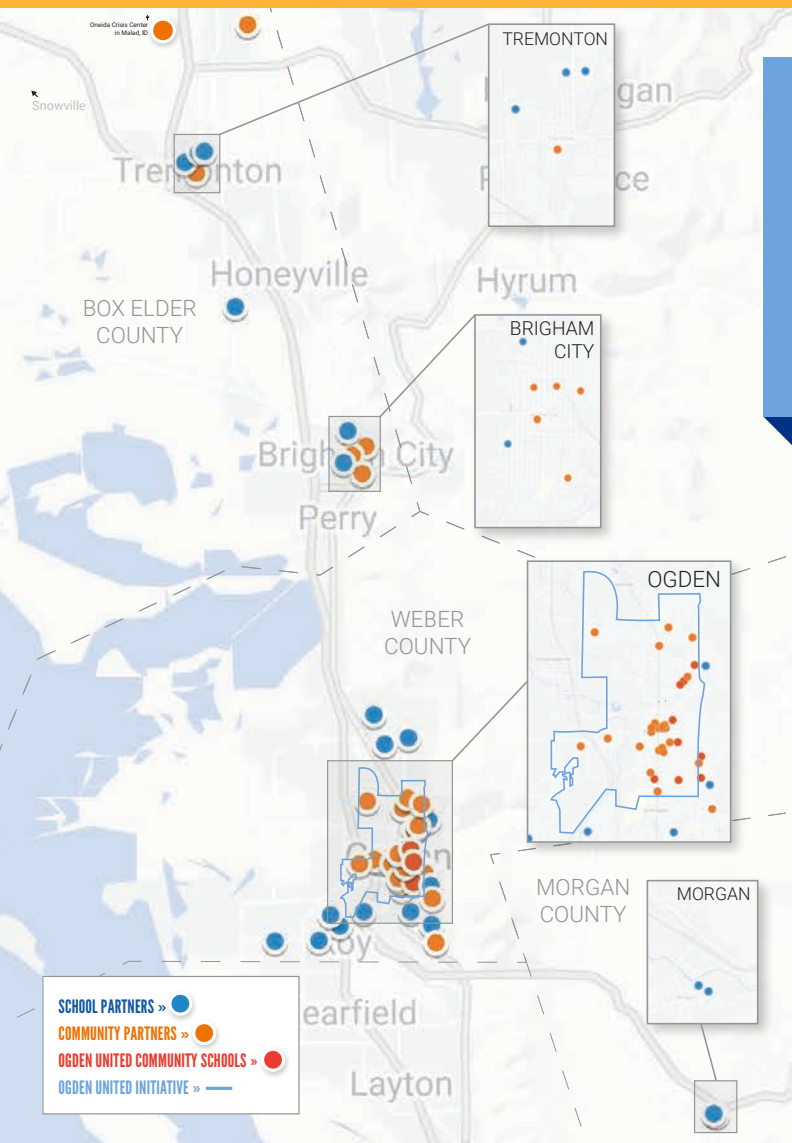
CEO & President
United Way of Northern Utah

A handwritten signature in white ink that reads "Michael Joseph".

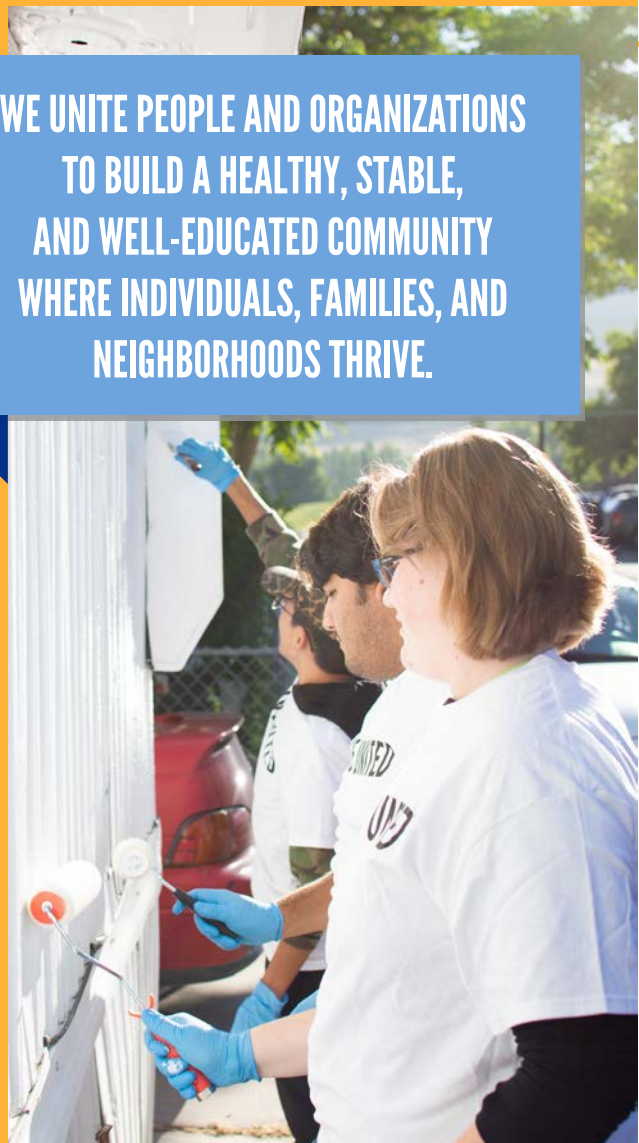
Michael Joseph

Chair, Board of Directors

OUR COMMUNITIES



WE UNITE PEOPLE AND ORGANIZATIONS TO BUILD A HEALTHY, STABLE, AND WELL-EDUCATED COMMUNITY WHERE INDIVIDUALS, FAMILIES, AND NEIGHBORHOODS THRIVE.



GENERAL COMMUNITY DATA

	Total Population	Median Household Income	Percent of Population				
			Childhood Poverty	Foreign Born	Hispanic	Renters	Mobility
Ogden United	60,094	\$28,975	31.1%	15.3%	40.5%	49.8%	--
Ogden City	85,497	\$43,361	23.0%	12.8%	32.3%	44.6%	23.7%
Box Elder County	52,182	\$58,835	13.0%	3.3%	9.1%	23.8%	10.4%
Morgan County	11,014	\$86,071	1.0%	--	2.6%	15.5%	--
Weber County	244,101	\$62,036	15.4%	6.9%	17.9%	28.2%	16.8%
State of Utah	2,993,941	\$65,325	12.5%	8.3%	13.7%	30.4%	17.1%

Source: United States Census Bureau, 2013-2017 American Community Survey 5-Year Estimates

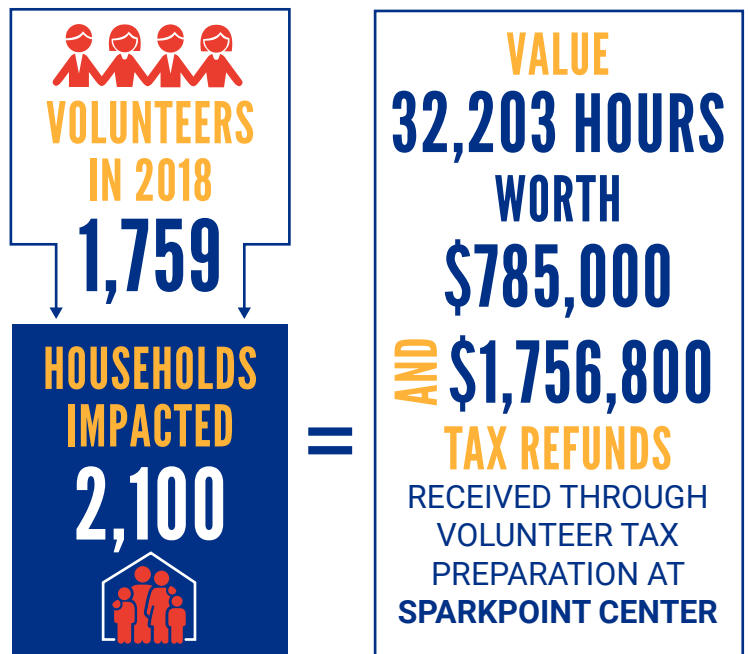
OUR VOLUNTEERS

"If our hopes of building a better and safer world are to become more than wishful thinking, we will need the engagement of volunteers more than ever." – Kofi Annan

MAJOR VOLUNTEER PARTNERS

ASSOCIATED FOODS
BANK OF UTAH
BRIDGE HOUSE HEALTH
CITIGROUP
GREAT WESTERN INSURANCE COMPANY
HABITAT FOR HUMANITY OF NORTHERN UTAH
INTERFAITH COMMUNITY
LIVE STRONG HOUSE
NORTHROP GRUMMAN
OGDEN CITY
OGDEN CLINIC
OGDEN PREPARATORY ACADEMY
OGDEN REGIONAL MEDICAL CENTER
POST CONSUMER BRANDS (MOM BRANDS)
PROCTER & GAMBLE
TARGET
WATERFALL CANYON ACADEMY
WEBER COUNTY
WEBER STATE UNIVERSITY
WELLS FARGO
WEX
ZIONS BANK

Volunteers are the driving force behind community change. With corporate and nonprofit partners, United Way of Northern Utah coordinates volunteers to elevate the success of the entire community. We build on a local sense of pride and readiness to help educate parents, tutor students, clean up neighborhoods, and help families and individuals become financially independent. Together, our volunteers are making a difference by helping us create healthy, stable, and well-educated communities where individuals, families, and neighborhoods thrive.



In addition to supporting elementary school reading, tutors in the UWNU-sponsored **Read. Graduate. Succeed.** program helped at-risk secondary students at Morgan High School. Of 16 seniors who participated, 13 were able to

graduate on time with the help of these volunteers. We have expanded support of this program to include four secondary schools in Box Elder County for the current 2018-19 school year.



OUR PARTNERSHIPS

United Way of Northern Utah puts your donation to work like no other organization can.

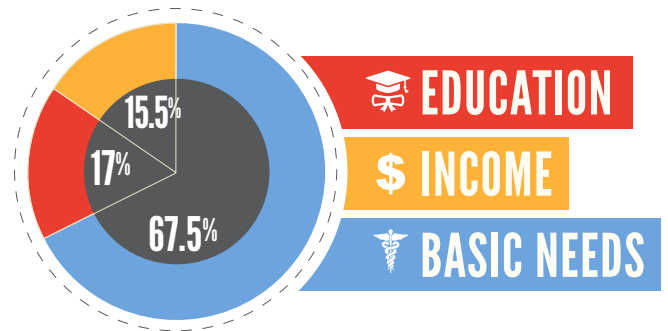
Amplifying our reach through strong and vibrant partnerships, your gift is invested in a network of dynamic programs and initiatives that bring people across the community together. We engage local businesses, private agencies, and government organizations to raise money and address community issues from all sides. We invest our resources locally, helping to break the cycle of poverty and social inequality. Everything we do is made possible by our generous network of donors, grantors, and people who care.



Day of Caring brings together corporate and community partners for a day of hands-on volunteer work, and 2018 was our biggest year yet.

Northrop Grumman and **Procter & Gamble** employees worked with community volunteers to clear three trailers' worth of brush and debris for Habitat for Humanity of Northern Utah and clean up a local trailer park. Another volunteer crew worked with **Ogden City** on 16 homes and other neighborhood cleanup projects. Together, we are building stronger neighborhoods!

\$200,000 COMMUNITY IMPACT GRANTS
DISTRIBUTED IN BOX ELDER AND WEBER COUNTIES



DONATIONS [**\$1 MILLION** RAISED BY **1,500** CORPORATE & COMMUNITY DONORS]

173 PARTNERSHIPS WITH BUSINESS, NONPROFIT, AND GOVERNMENT ORGANIZATIONS

TOP 5 CORPORATE CAMPAIGNS

- NORTHROP GRUMMAN
- KIMBERLY CLARK
- PETERSEN INC.
- AUTOLIV
- AMERICAN NUTRITION





OUR IMPACT

Through our community impact work, United Partnerships, we are combining forces with school districts, local organizations, and the Promise Partnership Regional Council. Together we've set a goal to improve entire communities.

We do so by working with partners to support prenatal health, parent education, and high-quality preschool, giving every child their best chance for a healthy start. We work with school districts to provide in-school student advocates, one-on-one academic help, and a strong support system to help every child prepare to graduate from high school ready for college or career training. We work with local organizations to help every family and individual have access to food, secure housing, and health services, while supporting programs that promote financial independence and career training.

IMPACT AREAS

EDUCATION

PREPARE ALL CHILDREN TO SUCCEED IN SCHOOL AND LIFE

INCOME

BUILD A COMMUNITY OF FINANCIALLY STABLE AND INDEPENDENT FAMILIES

HEALTH

SUSTAIN A COMMUNITY OF HEALTHY YOUTH AND ADULTS




Angel grew up without a stable family life. By high school, he was involved in drugs and on the way to dropping out. He began working with our Community School Coordinator during his junior year and got the help he needed to stay out of trouble, take care of his sisters, and catch up on coursework so he could graduate on time. He's working on technical career training, leading to a bright future.


2018

BY THE #S

Visited  **297 FAMILIES** to support parenting skills and early childhood learning

Provided high-quality preschool to **94 LOW-INCOME CHILDREN** 

Worked with **44 PARTNERS**  to directly assist over **2,000 STUDENTS** in need at **7 COMMUNITY SCHOOLS**

 Answered **6,315 CALLS** in Northern Utah, and made **198,289 REFERRALS** to **2,735 RESOURCES** statewide

Tutored over **600 ELEMENTARY SCHOOL STUDENTS** at **26 SCHOOLS** through 

Helped over **2,100 PEOPLE** work toward **FINANCIAL INDEPENDENCE** through services at the  **SPARKPOINT CENTER** at Cottages of Hope, for an estimated impact of over **\$4.3 MILLION**



FINANCIALS, STAFF, & BOARD MEMBERS

FINANCIAL REPORT



Source of Funds

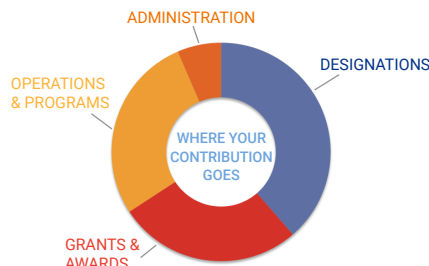
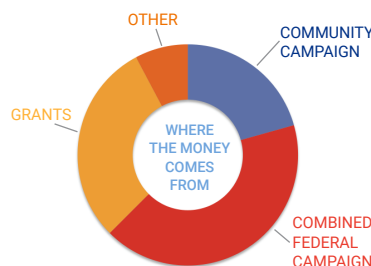
Community Campaign	\$974,731
Combined Federal Campaign*	\$1,974,639
Grants	\$1,400,769
Other	\$366,968
Total	\$4,717,107

Allocations of Funds

Designations	\$2,349,052
Grants & Awards	\$1,650,922
Operations & Programs	\$1,687,994
Administration	\$392,859
Total	\$6,080,827

Change in Net Assets (\$1,363,720)**

This report is based on the 2017 financial audit and 990. See complete audited financial statements at uwun.org.



*CFC Income and designations were not included on the 2017 form 990 due to changes in Federal Regulations regarding the collection and disbursement of CFC pledges.

**The apparent decline from 2016 to 2017 is due to the timing of the final disbursement of funds from the closing of the St. Benedict's Foundation, which occurred in 2016. United Way was the fiscal agent for this funding and is not operating at a deficit.

BOARD MEMBERS

Michael Joseph
Board Chair

Steve Waldrip
First Vice Chair, Resource Development Committee Chair
Utah House of Representatives, District 8

David Sebahar
Second Vice Chair

Erich Sontag
Treasurer, Investment Committee Chair
Peoples Intermountain Bancorp

Larry Muench
Audit Committee Chair

Kent Streuling
Human Resources Chair
America First Credit Union

Cory Gardiner
Nominating Committee Chair
Zions Bank

Tiffany Burnett
Public Affairs Committee Chair
Ogden Regional Medical Center

Alden Farr
Raymond James Financial Services

Ben Browning
Bank of Utah

Brad Mortensen
Weber State University

Chris Dallin
Intermountain Healthcare

Dave Correll

Earl Benson
Northrop Grumman

Janis Vause
Ogden School Foundation

Jeff Rawlings
Kimberly Clark

Kearston Cutrubus
Cutrubus Automotive Team

Mark Jenkins
Petersen Incorporated

Mark Suchan
Post Consumer Brands

Mat Ellis
The Church of Jesus Christ of Latter-day Saints

Michael Quayle
Autoliv

Mike Caldwell
Ogden City Mayor

Rhett Long
Standard-Examiner

Sabrina Depenbrock
Procter & Gamble

Tim Wheelwright
Durham Jones & Pinegar

UNITED WAY OF NORTHERN UTAH STAFF

Alex Jolley *Welcome Baby Coordinator*
Ali Gustafson *Administrative Assistant*
Amy Nielson *Community School Coordinator*
Angela Voraotsady *Community School Coordinator*
Ariana Lara *Community School Coordinator*
Christy Jacobs *Marketing Manager*
Debbie Noseworthy *Director of Support Services*
Ella Mitchell *2-1-1 Manager*
Gina DeSantis *Grant Budget Administrator*
Heather Crockett *Early Childhood Coordinator, Box Elder County*
Iveth Vazquez *Community School Coordinator*
Janet Jarnaque *Community School Coordinator*
Julie Johnson *Welcome Baby Director*
Julie Miller *Community Impact Director*
Katie Smith *Administrative Assistant*
Kristal Sabaitis *Community School Coordinator*
Kristin Thacker *Early Childhood Coordinator, Weber County*
Liz Corona *Donor Engagement Manager*
Lori Ransom *Impact Coordinator*

Mackenzie Kasper *Data Entry Tech, Welcome Baby*
Madeline McDonald *Community School Director*
Maria Huerta *Community School Coordinator*
Mitchell McBride *Director of Marketing and Development*
Rachel Jennings *Community School Coordinator*
Tanner Koons *Community School Coordinator*
Tim Jackson *President and CEO*
Wesley Boykin *Director of Assessment, Research, and Evaluation*



OUR PARTNERS

FUNDERS

The following corporations, foundations, and organizations have generously contributed to our work:

\$100,000 AND ABOVE



\$25,000-\$99,999



\$10,000-\$24,999



UP TO \$10,000

- | | | |
|-------------------------------------|--|------------------------------------|
| 3M | George & Mary Hall Foundation | Saint Anne's Center/ Lantern House |
| AAA NCNU | Glaxo Smith Kline | SBC |
| Advanced Auto Parts | Goldenwest Credit Union | Shopko |
| Altrusa | Gordmans | Simplex Grinnell |
| American Dream Foundation | H & R Block | Smith's Food & Drug Stores |
| American West Bank | Hanover Insurance | Standard Examiner |
| Anderson Company | Harland Clarke American | State Farm Insurance |
| Associated Foods | Homeless Veterans Fellowship | South Ogden City |
| AT&T Wireless | Horizon Milling | Sprint |
| Bank of America | HVHC Inc. (Corporate Offices) | SWBC |
| Benco Dental Supply Co. | IBM | Symbol Arts |
| Best Buy | lomega Corporation | Synchrony Financial |
| BMO Harris | ITW National | Target |
| Boman & Kemp Steel | James & Co. | The Andersons, Inc. |
| Border States Electric | J.C. Penney | Timken Company |
| Boyer Company | JBT Corporation | T-Mobile |
| Boys & Girls Clubs of Weber-Davis | JP Morgan Chase | Trapper Trails Council, Boy Scouts |
| Brigham City Community Hospital | Kellogg | Triumph Group |
| Browning | Key Bank | True Value |
| Cambria Health | Lafarge Holcim | Turn Community Services |
| Cardinal Health | Lenovo | Turner Industries |
| Cargill | Macys Department Store | Union Pacific |
| Catholic Community Services of Utah | Management & Training Corp | UMB Fund Service |
| CenturyLink | Manpower | US Bank |
| Ceridian Employee Services | Mazda | US Foods |
| Chevron | McKay Dee Foundation | Utah Transit Authority |
| Community Nursing Services | Midtown Community Health Clinic | Valley View Elementary School |
| ConAgra Foods | Nationwide | Vista Outdoors |
| Costco | Newgate Mall | Walmart Main |
| Crafco | Nordstrom Rack | Weber County |
| Delta Airlines | Northstar HVAC | Weber County Library System |
| Dillard's | Ogden City School District | Weber School District |
| Ecolab | Ogden School District | Weber State University |
| Eide Bailly | Foundation | Weber State Credit Union |
| Eli Lilly | Ogden-Weber ATC | Western Zirconium |
| Elkay Manufacturing | Ogden-Weber Community Action Partnership | Westinghouse |
| Enterprise | Oneida Crisis Center | WEX |
| Exact Sciences Corp. | Onstage Ogden | Wiggins & Co. |
| Fairchild Semiconductor | O'Reilly Auto parts | Williams Gas Pipeline |
| Family Counseling Service | Overland West | YMCA of Northern Utah |
| Federal Express | PacifiCorp | YCC Family Crisis Center |
| First National Bank of Layton | Parker Hannifin | Zachry Industries |
| General Electric | Prevent Child Abuse Utah | Zions Bank |
| Genuine Parts | PacifiCorp/Rocky Mtn. Power | |

COMMUNITY SERVICE GRANT RECIPIENTS

- | | |
|--|--|
| A Center for Grieving Children | New Hope Crisis Center |
| Acts Six Soup Kitchen | Ogden Weber Community Action Partnership |
| Adele C. Young Intermediate | Ogden-Weber Tech College Foundation |
| Big Brothers Big Sisters of Utah | Oneida Crisis Center, Inc. |
| Box Elder Community Pantry | People Helping People |
| Box Elder Family Support Center | Prevent Child Abuse Utah |
| Boys and Girls Club of Weber-Davis | Soroptimist International of Ogden |
| Brigham City Fine Arts Center | The Christmas Box House International |
| Brigham Suicide Prevention | The Salvation Army |
| Catholic Community Services | Treehouse Children's Museum |
| Cottages of Hope | Tremonton City Community Food Pantry |
| Enable Utah | YCC Family Crisis Center |
| Family Counseling Service of Northern Utah | Youth Futures |
| Family Promise of Ogden | Youth Impact |
| Homeless Veterans Fellowship | |
| Junior League of Ogden | |
| Lantern House | |

OGDEN UNITED PARTNERS

- | | |
|---|--|
| America First Credit Union | Power of Moms |
| Boyer Company | The Children's Center |
| Boys & Girls Club of Weber-Davis | Treehouse Children's Museum |
| Bright By Text | Utah Department of Workforce Services |
| Care About Childcare | Utah Educational Savings Plan |
| Community Residents | Utah State Senate |
| Cottages of Hope | Utah State Board of Education |
| Daniels Fund | Waterford UpStart |
| DaVinci Academy (Charter School) | Weber County |
| Early Childhood Utah | Weber County Library |
| Hall Foundation | Weber Human Services |
| Help Me Grow Utah | Weber State University - Child & Family Studies Department |
| Intermountain Healthcare | Weber State University - Ogden Civic Action Network |
| Lafarge Holcim | Weber State University - Provost |
| McKay-Dee Hospital - Developmental Screening Clinic | Weber State University - Walker Institute |
| McKay-Dee Hospital - Education Department | Weber State University - Access & Diversity |
| Midtown Community Health | Weber State University - Center for Community Engaged Learning |
| NUAMES (Charter School) | Weber State University - Community Education Center |
| Ogden City Council | Weber-Morgan Early Intervention |
| Ogden Preparatory Academy (Charter School) | YMCA of Northern Utah |
| Ogden School District | |
| Ogden Weber Community Action Partnership | |
| Ogden-Weber Tech College | |
| Parents As Teachers (Prevent Child Abuse Utah) | |



United Way of Northern Utah

2955 Harrison Blvd. #201 | Ogden, UT 84403

801-399-5584

UWNU.ORG

Membership Disclosure
United Way of Northern Utah does not charge dues from its member organizations. No fees from designated contributions—whether United Way or the Combined Federal Campaign—are withheld beyond normal and approved campaign expenses.