



United Way  
of Northern Utah



OPENING DOORS, CHANGING LIVES.

LIVE UNITED®

2016-17  
ANNUAL REPORT  
TO THE COMMUNITY

# CHAIR & CEO MESSAGE

Dear Friends,

United Way of Northern Utah's mission is to **unite people and organizations to build healthy and well-educated communities where individuals, families, and neighborhoods thrive.**

We work for the education, health, and financial stability of all Northern Utah residents. We understand the unique needs of both urban and rural areas in our community. We build partnerships to strengthen neighborhoods by developing and funding programs and partners to increase the abilities of vulnerable populations. We provide lifelines and resources to those in the community to fulfill their dreams of pulling themselves from poverty or to achieve an education to provide a better life for their family.

United Way is committed to supporting the entire community by providing resources to those in a crisis or access to important programs. We continue to be the community's "reception center" for needs and resources through the 2-1-1 program. In addition, we continue to develop world-class and nationally recognized programs to make our area a better place to live and work.

We have found that we are well suited to strategically unite partners and create collaborative initiatives to solve long-lasting, systemic community challenges. It is in this arena where we have seen the most growth. Often acting as the "convener," the "backbone," and the "fundraiser," our success in supporting the community in this space is tied to the quality of our relationships with community partners in the nonprofit, public, and private sectors, as well as with our own residents.

Several of these key initiatives include: the **Ogden United Promise Neighborhood** cradle to career initiative, the **SparkPoint** financial empowerment initiative, **Early Childhood** service alignment and program expansion, and the **Read.Graduate.Succeed.** tutoring initiative.

This report is merely a snapshot of our work. We invite you to learn more and engage with us by visiting us at [www.uwnu.org](http://www.uwnu.org), signing up for our newsletter, or liking us on social media—each of which will provide you with more opportunities to **GIVE. ADVOCATE. VOLUNTEER.**

We look forward to joining you as we continue to build a community where everyone can thrive and where we all **LIVE UNITED.**

Sincerely,



A handwritten signature in black ink that reads "Chris F. Dallin".

**Chris Dallin**  
Chair, Board of Directors



A handwritten signature in black ink that reads "Robert A. Hunter".

**Robert A. Hunter**  
President & CEO

# UNITED WAY OF NORTHERN UTAH OPENING DOORS FOR...



## EARLY CHILDHOOD

### WELCOME BABY

Welcome  Baby

Welcome Baby is a free community service that promotes a healthy, secure, and enjoyable beginning for new babies and family members. Volunteers visit mothers each month and provide them with age-appropriate information on childhood development and parenting tips.



**16**  
HOME VISIT  
VOLUNTEERS

**169**  
FAMILIES  
VISITED

**1621**  
TOTAL  
HOME  
VISITS

**1859**  
TOTAL  
VOLUNTEER  
HOURS

### INSPIRE PLAYGROUPS

Inspire Playgroups offer parenting classes and children's activities with a research-based curriculum that will increase parenting skills and enhance children's school readiness. Classes are free to the community.

**5** DIFFERENT PLAYGROUPS  
OPERATING AT:

**2** DIFFERENT SITES → United Way Site  
→ Imagine Jefferson Site

**487** CAREGIVERS  
ATTENDED CLASSES

**390** PLAYGROUP  
SESSIONS



## SCHOOL SUCCESS

### READ.GRADUATE.SUCCEED.

United Way is an official partner in the AmeriCorps *Read.Graduate.Succeed.* initiative, which places volunteers in elementary schools to provide one-on-one reading tutoring to struggling students. 1,343 students received individual reading help in the 2015-16 school year. These students averaged 41% greater improvement in reading speed than students not in the program. By the end of the year, 80% of students who participated in the program were reading at or above reading level for their grade.

**1,010**  
VOLUNTEERS

**1,343**  
STUDENTS

**22**  
SCHOOLS FUNDED



OVER **35** SCHOOLS  
SUPPORTED WITH VOLUNTEERS



# OGDEN UNITED PROMISE NEIGHBORHOOD



The goal of the Ogden United Promise Neighborhood (OUPN) is to ensure all children and youth have access to great schools and strong systems of family and community support that will prepare them to attain an excellent education and successfully transition to college and career.

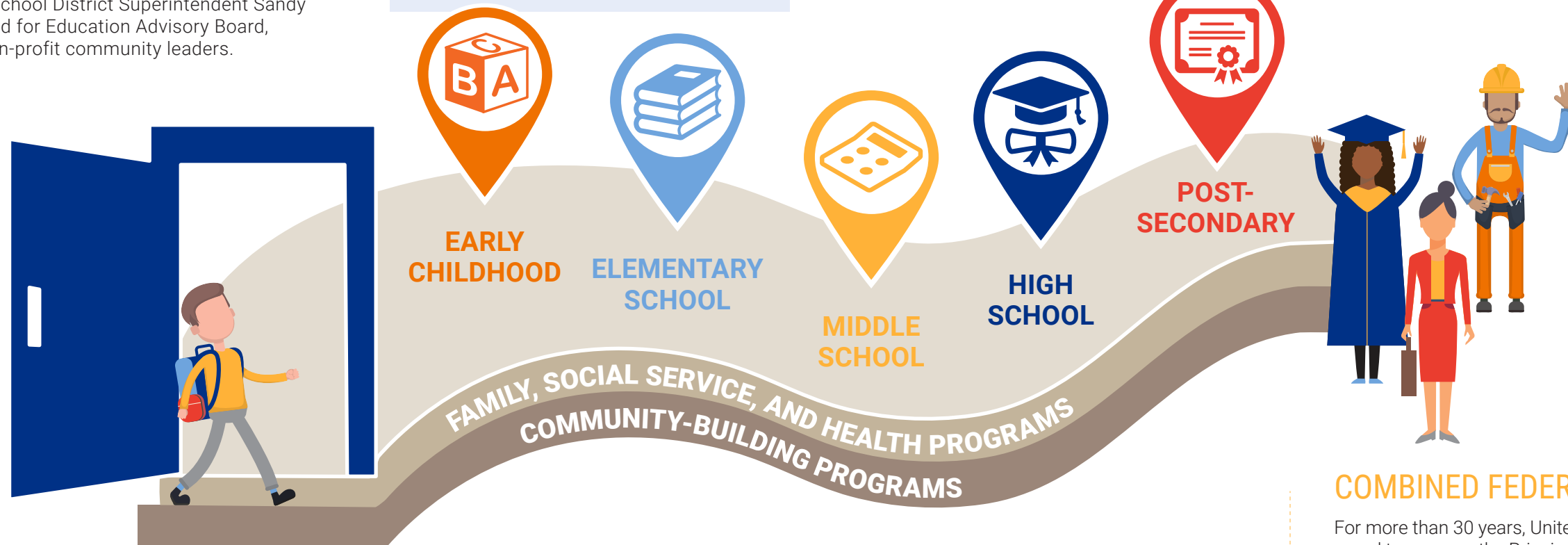
United Way of Northern Utah was one of four grantees awarded the three-year Partnerships for Student Success Grant from the Utah State Board of Education (\$500,000 per year). The grant builds upon OUPN collaboration, expands Collective Impact efforts, and supports children and families in Ogden High School and its feeder schools. This effort is designed to increase student success from early childhood through college graduation, and combines the expertise and services of over a dozen community organizations. UWNU is privileged to be the steward of these funds in working with Ogden School District and the community.

Senator Ann Millner and Ogden School District Superintendent Sandy Coroles co-chair the Ogden United for Education Advisory Board, which is made up of civic and non-profit community leaders.



## Key Services

- High-quality preschool through YMCA
- Family and youth specialists in local schools
- Tutoring and mentoring in junior high
- Credit recovery and acceleration supports
- Parent ambassadors
- Financial literacy education
- Parent education and leadership classes
- College savings plan and incentives



## GRADUATION AND POST-SECONDARY

### COMMUNITY SCHOOL WORK



Three new Family and Youth Specialists have been working in local schools to connect families and students with needed resources available in the community, such as GED programs, preschools, and Weber State's free STEM summer camps.

A new Education and Career Advocate at the Weber State University Community Education Center provides outreach and support to students who have left the traditional education pathway without graduating from high school.

Family and Youth Specialists (L-R)  
Ariana Sanguino, Secily Anson, and Tanner Koons

# COMMUNITY SOCIAL AND FINANCIAL PROGRAMS

## SPARKPOINT CENTER

Since 2014, United Way has partnered with Cottages of Hope to operate the SparkPoint Center, where multiple agencies collaborate in one building to help low-income families move from poverty to financial stability.

### 2016-17 SPARKPOINT RESULTS

PROGRAM/INITIATIVE	INDIVIDUALS SERVED (APRIL 2016–MARCH 2017)
VITA Refund and Tax Preparation	980 households, \$1.9 million in total refunds and estimated tax preparation savings
Financial Capacity Building Services (Credit Building, Debt Reduction, Financial Literacy, Budgeting, and Asset Building)	620 individuals served; 42 new client bank accounts opened; over \$180,000 saved; over \$600,000 debt eliminated through debt forgiveness, use of tax refunds, and budgeting
Expungement	231 individuals received education and/or one-on-one coaching with expungement process
Skills Training & Work Readiness	425 individuals received individual coaching and training. 168 full-time jobs were obtained at an average of \$11.04 per hour, resulting in an estimated \$3 million in wages earned.
SparkPoint Center Services	Over 4,000 individuals served through participating partners



## Partners

- Cottages of Hope
- Utah Department of Workforce Services
- People Helping People
- YCC Family Crisis Center
- Futures Through Training
- Ogden-Weber Applied Technology College

## LEGISLATIVE ADVOCACY

United Way of Northern Utah (UWNU) serves as a member of the United Ways of Utah Public Policy Council and the Northern Utah Chambers of Commerce Coalition (NUCC). During the 2017 Legislative Session, UWNU and public policy partners successfully helped secure legislative funding for the 2-1-1 Information and Referral system, the Lantern House homeless shelter, and UWNU's home for local charities. We also supported new legislation for Early Childhood Services Coordination (SB 100) and the Student Prosperity Savings Program (HB 24), both of great benefit in supplementing the focused work of United Ways across the state.

## COMBINED FEDERAL CAMPAIGN

For more than 30 years, United Way of Northern Utah has been proud to serve as the Principal Combined Fund Organization (PCFO) for the regional Combined Federal Campaign (CFC)—the annual workplace charity drive for all military, postal, and federal civilian employees. During that time, the CFC has raised more than \$50 million to support local and national nonprofit organizations.

2016 CFC Show Some Love campaign



\$234 AVERAGE GIFT

\$2,037,995 RAISED

1,861 CHARITIES FUNDED

8,691 CONTRIBUTORS

# BOARD OF DIRECTORS

**Chris L. Dallin**

Intermountain Healthcare  
Board Chair

**Cory Gardiner**

Zions Bank  
First Vice-Chair

**Michael Joseph**

Retired Iomega Executive  
Second Vice-Chair

**Ben Browning**

Bank of Utah

**L. Kirk Bullard**

Coldwell Banker

**Tiffany Burnett**

Ogden Regional Medical Center

**Mike Caldwell**

Ogden City Mayor

**Dave Correll**

Community Representative

**Kearston Cutrubus**

Cutrubus Automotive Team

**Daniel C. Decker**

LDS Humanitarian Services

**Sabrina Depenbrock**

Procter & Gamble

**Scott Ericson**

Utah Department of Agriculture and Food

**Brandon Erlacher**

Standard-Examiner

**Alden Farr**

Raymond James Financial Services

**Dave Hardman**

Community Representative

**Mark Jenkins**

Petersen Incorporated

**Charles B. Kaiser, III**

Weber State University

**Rand Matthews**

Community Representative

**Brad Mortensen**

Weber State University

**Larry Muench**

Community Representative

**Mike Nixon**

LafargeHolcim, Inc.

**Steve Parton**

Lockheed Martin

**Michael Quayle**

Autoliv

**Jeffrey Rawlings**

Kimberly-Clark

**Jeff Scott**

Box Elder County Commissioner

**David A. Sebahar**

Orbital ATK

**Erich Sontag**

Banner Bank

# FINANCIAL REPORT

## Source of Funds

Community Campaign	\$2,914,519
Combined Federal Campaign	\$1,524,914
Grants	\$634,935
Other	\$198,629
<b>Total</b>	<b>\$5,272,998</b>

## Allocations of Funds

Designations	\$3,709,131
Operations, Programs, and Grant	\$1,909,525
<b>Total</b>	<b>\$5,618,656</b>

This report is based on the 2015 990.  
See complete audited financial statements at [uwnu.org](http://uwnu.org).

**Kent Streuling**

America First Credit Union

**Mark Suchan**

Post Consumer Brands

**Janis Vause**

Ogden School Foundation

**Steve Waldrip**

Rocky Mountain Homes Fund

**Chris Zimmerman**

Weber School District Foundation

**Jan Zogmaister**

National Battery Sales

# UNITED WAY OF NORTHERN UTAH STAFF

**AJ Franks**

Campaign Manager

**Angela Choberka**

Assistant Director, OUPN

**Ariana Sanguino**

Family and Youth Specialist

**Becky Stromberg**

Administrative Assistant

**Bob Hunter**

President & CEO

**Bruce Jacobs**

Executive Director, CFC

**Daniela Wolford**

Program Coordinator, Inspire Playgroups

**Debbie Noseworthy**

Director of Support Services

**Durrell Annis**

Program Director, Inspire Playgroups

**Ella Mitchell**

2-1-1 Manager

**Gina DeSantis**

Grant Budget Administrator

**Heather Crockett**

Welcome Baby Coordinator

**Julie Johnson**

Program Director, Welcome Baby

**Karleigh Cragun**

AmeriCorps/VISTA

**Katie Smith**

Administrative Assistant

**Mitch McBride**

Director of Marketing and Development

**Secily Anson**

Family and Youth Specialist

**Tanner Koons**

Family and Youth Specialist

**Taylor Knuth**

Community Services Coordinator

**Tim Jackson**

Chief Operating Officer and Director, OUPN



# FUNDERS

The following corporations, foundations, and organizations have generously contributed to our work.

## \$100,000 AND ABOVE



## \$25,000-\$99,999



## \$10,000-\$24,999



## UP TO \$10,000

- |                                     |  |                                    |
|-------------------------------------|--|------------------------------------|
| 3M                                  | George & Mary Hall Foundation            | Saint Anne's Center/Lantern House  |
| Advanced Auto Parts                 | Glaxo Smith Kline                        | SBC                                |
| American Dream Foundation           | Goldenwest Credit Union                  | Shopko                             |
| American West Bank                  | H & R Block                              | Simplex Grinnell                   |
| Anderson Company                    | Hanover Insurance                        | Smith's Food & Drug Stores         |
| Associated Foods                    | Homeless Veterans Fellowship             | Standard Examiner                  |
| Benco Dental Supply Co.             | Horizon Milling                          | State Farm Insurance               |
| Best Buy                            | IBM                                      | Symbol Arts                        |
| Box Elder Community Pantry          | Iomega Corporation                       | Tab Bank                           |
| Boyer Company                       | ITW National                             | Target                             |
| Boys & Girls Clubs of Weber-Davis   | James & Co.                              | The Andersons, Inc.                |
| Brigham City Community Hospital     | J.C. Penney                              | Timken Company                     |
| Browning                            | JBT Corporation                          | Trapper Trails Council, Boy Scouts |
| Cambia Health                       | JP Morgan Chase                          | True Value                         |
| Cargill                             | Key Bank                                 | Turn Community Services            |
| Catholic Community Services of Utah | Lenovo                                   | Union Pacific                      |
| CenturyLink                         | Macys Department Store                   | UMB Fund Service                   |
| Ceridian Employee Services          | Management & Training Corp               | United Way of Northern Utah        |
| Chevron                             | Mazda                                    | US Bank                            |
| Community Nursing Services          | McKay Dee Foundation                     | Utah Transit Authority             |
| ConAgra Foods                       | Midtown Community Health Clinic          | Valley View Elementary School      |
| Convergys                           | Nationwide                               | Vista Outdoors                     |
| Costco                              | Northrop Grumman                         | Weber County                       |
| Crafco                              | Northstar HVAC                           | Weber County Library System        |
| Dillard's                           | Ogden School District                    | Weber School District              |
| Ecolab                              | Ogden School District Foundation         | Weber State University             |
| Eide Bailly                         | Ogden Weber ATC                          | Western Zirconium                  |
| Eli Lilly                           | Ogden-Weber Community Action Partnership | Westinghouse                       |
| Enterprise                          | Orbital ATK                              | Wiggins & Co.                      |
| Fairchild Semiconductor             | Overland West                            | Williams Gas Pipeline              |
| Family Counseling Service           | PacifiCorp                               | YMCA of Northern Utah              |
| Federal Express                     | Prevent Child Abuse Utah                 | Your Community Connection of Ogden |
| General Electric                    | PacifiCorp/Rocky Mtn. Power              |                                    |
| Geniune Parts                       |  |                                    |

# COMMUNITY PARTNERS

- |   |  |
|---|--|
| A Center for Grieving Children,   | Morgan Education Foundation                    |
| The Family Summit Foundation  | National Center on Shaken Baby Syndrome        |
| Acts Six Soup Kitchen   | New Hope Crisis Center                         |
| Aerospace Heritage Foundation of Utah                                   | Ogden Association for the Blind                |
| American Red Cross of Northern Utah                                     | Ogden Diversity Commission                     |
| AmeriCorps Read.Graduate. Succeeded.                                    | Ogden Nature Center                            |
| Bear River Association of Governments                                   | Ogden School Foundation                        |
| Box Elder Community Pantry  | Ogden-Weber Community Action Partnership       |
| Box Elder Family Support Center   | Ogden-Weber Tech College Foundation            |
| Box Elder School District Foundation                                    | Oneida Crisis Center                           |
| Boys & Girls Clubs of Weber-Davis                                       | Oneida Education Foundation                    |
| Brigham City Fine Arts Center   | PAAG (Positive Assistance Action Group)        |
| Brigham City Library  | People Helping People                          |
| Catholic Community Services of Utah and the Joyce Hansen Hall Food Bank | Phoenix Services                               |
| Christmas Box International   | Pregnancy Care Center of Brigham City          |
| Combined Federal Campaign   | Pregnancy Care Center of Ogden                 |
| Community Action Partnership of Utah                                    | Prevent Child Abuse Utah                       |
| Community Nursing Services  | Prosperity 2020                                |
| Cottages of Hope  | Roads to Independence                          |
| Deaf and Blind Children's Fund, Inc.                                    | Rocky Mountain Homes Fund                      |
| Eccles Community Art Center   | SHARE, Inc.                                    |
| EnableUtah  | State of Utah Department of Workforce Services |
| Family Connection Center of Davis County                                | The Salvation Army                             |
| Family Counseling Services of Northern Utah                             | Toys for Tots                                  |
| Family Support Center of Ogden  | Trapper Trails Council, Boy Scouts             |
| Friends of the Weber/Morgan Children's Justice Center                   | Treehouse Children's Museum                    |
| Habitat for Humanity of Northern Utah                                   | Tremonton Community Food Pantry                |
| Habitat for Humanity Weber/Davis  | UPSTART  |
| Help Me Grow Utah   | Utah AIDS Foundation                           |
| Homeless Veterans Fellowship  | Utah Community Action                          |
| Hospice of Northern Utah  | Utah Down Syndrome Foundation                  |
| Foundation  | Utah Educational Savings Plan                  |
| Junior League of Ogden  | Utah Nonprofits Association                    |
| Knights of Columbus   | Weber Area Council of Governments              |
| Lantern House/St. Anne's Center   | Weber Human Services                           |
| LDS Church, Humanitarian Services                                       | Weber Pathways                                 |
| Make-A-Wish Foundation  | Weber School District Foundation               |
| McKay-Dee Foundation  | Weber State University (various departments)   |
| Midtown Community Health Clinic   | YCC Family Crisis Center                       |
|   | YMCA of Northern Utah                          |
|   | Youth Futures Shelter Home                     |
|   | Youth Impact, Inc.                             |



**United Way  
of Northern Utah**

**2955 Harrison Blvd. #201 | Ogden, UT 84403**

**Office 801-399-5584 | Fax 801-399-5599**

**UWNU.ORG**

Membership Disclosure  
United Way of Northern Utah does not charge dues from its member organizations. No fees from designated contributions—whether United Way or the Combined Federal Campaign—are withheld beyond normal and approved campaign expenses.

# 2016-2017 COLLECTIVE IMPACT RESULTS



**2,387 VOLUNTEERS**  
served in the community



**\$2.9 MILLION**  
raised through community  
**DONATIONS**



**1,343 STUDENTS**  
received **one-on-one** reading  
tutoring at **35 DIFFERENT**  
**SCHOOLS**



**242 BACKPACKS** and  
**\$6,000** of **SCHOOL**  
**SUPPLIES** distributed  
to local students



**210 ORGANIZATIONS**  
**UNITED** to serve Northern Utah



2-1-1 referred  
**8,174 INDIVIDUALS**  
to services from a database of  
**2,743 PROVIDERS**



**4,600 HOLIDAY TOYS**  
and **CLOTHING ITEMS**  
distributed to local children



**\$200,000 IN GRANT**  
**FUNDING** released to 24 partner  
organizations in Box Elder, Morgan,  
and Weber counties



**172,934**  
**DIAPERS DONATED**



**1,621 HOME VISITS**  
for early childhood and family  
education



**390 FREE** community  
**PLAYGROUP SESSIONS**



**20,000 BOOKS**  
**COLLECTED** for the community



**7,160 POUNDS** of  
**HOLIDAY TURKEY**  
and **HAM** given to local  
food banks



**1,100 COATS**  
**DISTRIBUTED** in partnership  
with Catholic Community Services,  
Knights of Columbus, EnableUtah,  
and YCC Family Crisis Center

## 2-1-1 REFERRALS

**8,174 CALLS RECEIVED** IN BOX ELDER,  
MORGAN, AND WEBER COUNTIES

**86,104 CALLS** STATEWIDE

**2,743 PROVIDERS**

**9,000 SERVICES** OFFERED

WITH  
OVER **8,174**  
DATABASE **PARTNER**  
INTERACTIONS



## GRANT CENTER

The Zada Haws Community Grant Center is open to grant seekers, grant makers, researchers, policymakers, the media, and the general public. Its database lists over 140,000 grant funding opportunities throughout the United States.

In the past year:

**82 GRANT SEARCHES** FOUND **1,449 GRANT OPPORTUNITIES**

